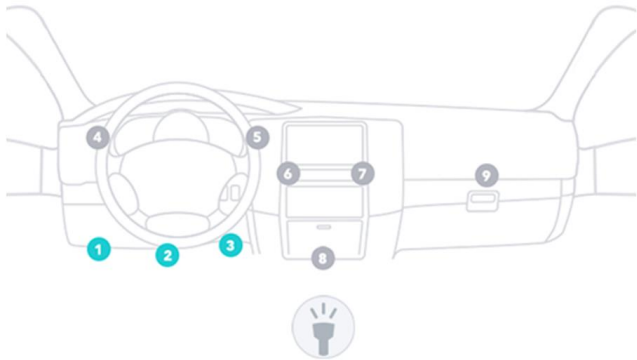


Mini OBDII

Use Instructions

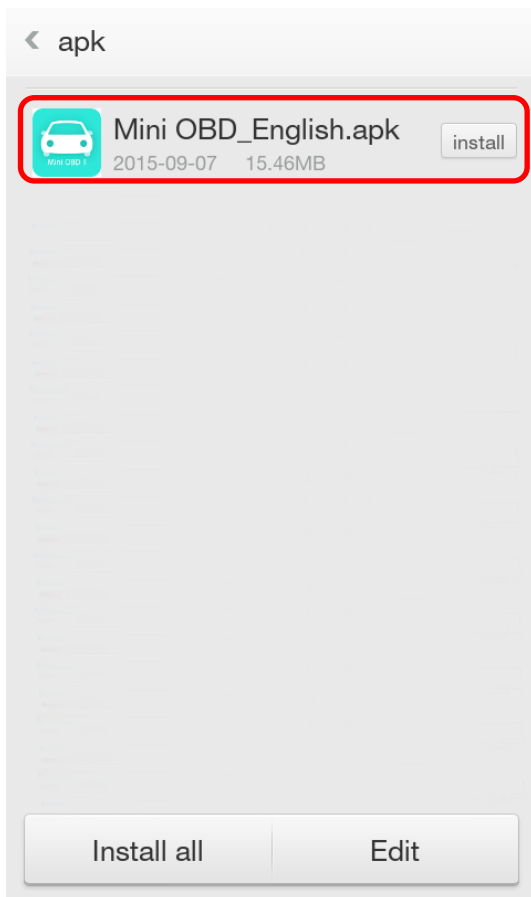
Mini OBDII for Android

1. Plug in OBDII adapter, start car engine

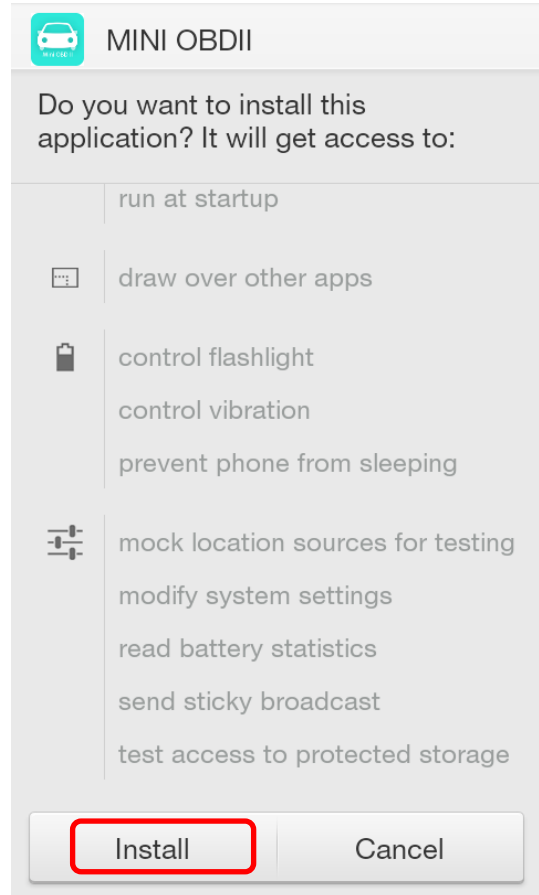


2. Install Software "Mini OBD"

a) Copy "Mini OBD" to phone from CD

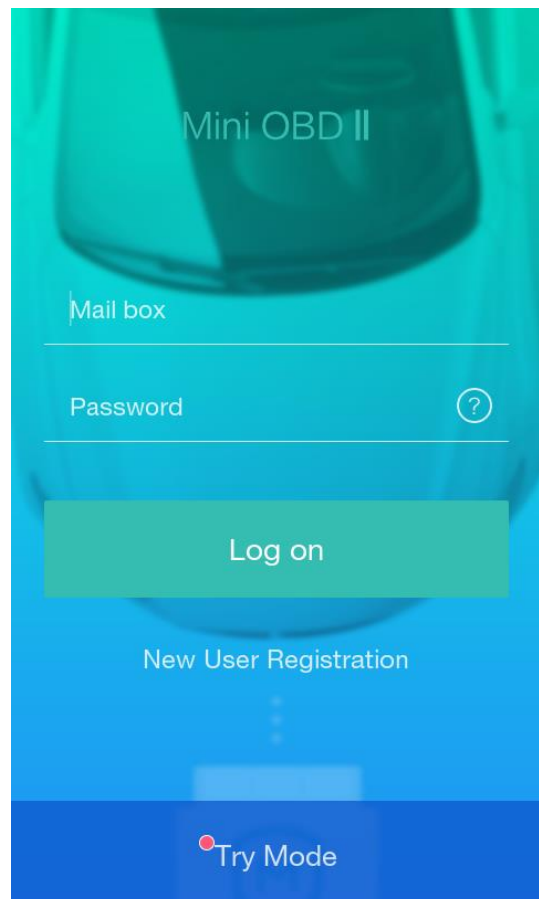


b) Install Software

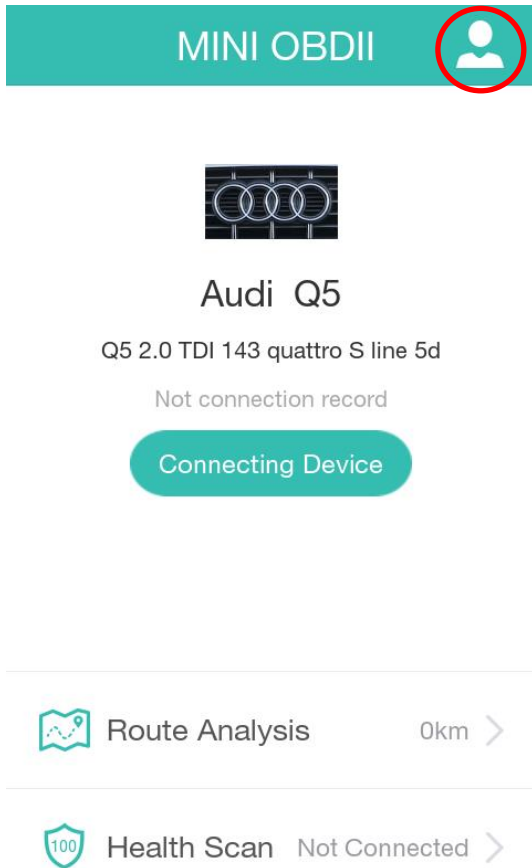


3. Launch Software "Mini OBDII"

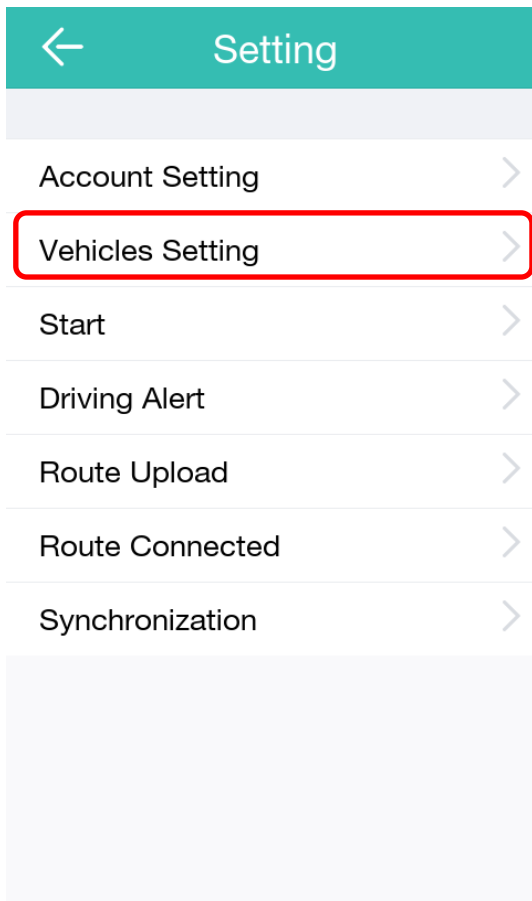
a) Register and login your account



b) Click at the Icon on the top right.

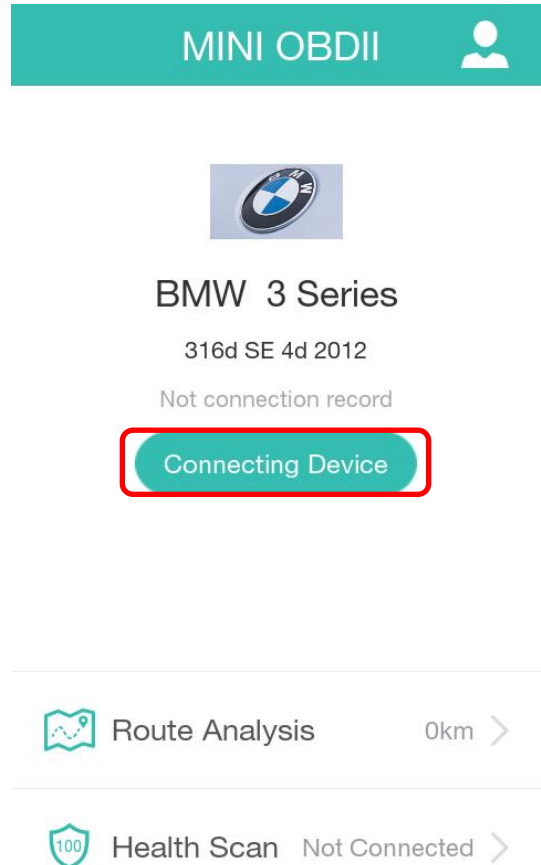


c) Click at "Vehicles Setting" and select the model of your car.

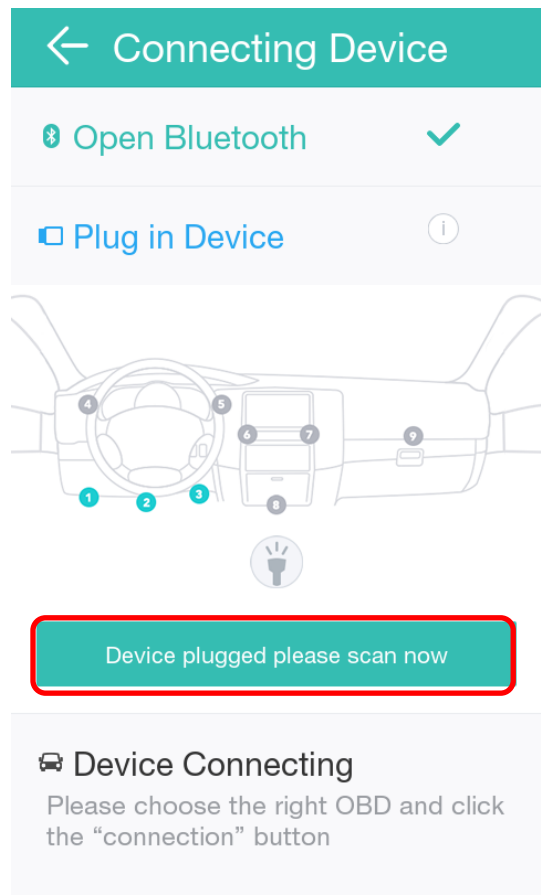


4. Connect with OBDII Adapter

a) Click at "Connecting Device" to prepare for OBDII adapter connection.



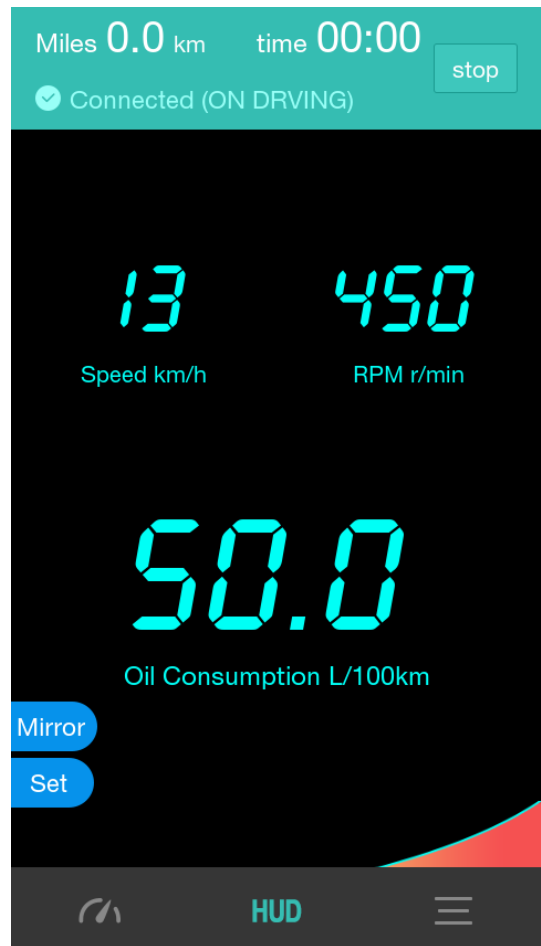
b) Click at "Device Plugged please scan now" to scan the OBDII Bluetooth.



c) Locate Bluetooth OBDII and click at Connect



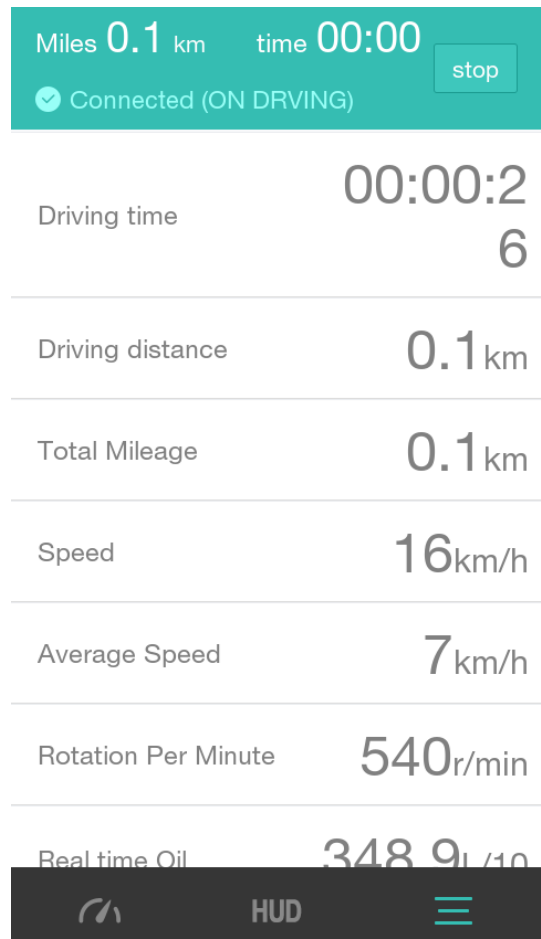
HUD Display



Vehicle Real Time Data



Vehicle Real Time Data Stream



Route Analysis

← Route Analysis Clear

0.05 Miles Km 0.70 Oil Consumption L

34 Score 09-08 11:06

Mileage km 0.05 Average oil consumption -- L/100km

0 Sharp acceleration times 0 Sharp brake times

Jun. Jul. Aug. Sep. Oct. Nov. Dec.

Health Scan

← Health Scan Clear

40

Inspect 41 item. result: have fault

beat 40% users

rediagnosis

last time: 2015-09-08 11:08:55

Serious fault(9)

! Trouble Codes P0230 FuelPumpPrimaryCircuit

! Trouble Codes P0231 FuelPumpSecondaryCircuitLow

! Trouble Codes P0234 Turbocharger/SuperchargerAOverboostCondition

Clear Fault Codes

← Clear History

2. After clearing the fault code, if the fault has not been repaired, when the vehicle detects a fault in the control exists, there will be trouble code again; in need of repair will disappear after;

3. After clearing the fault code, it may cause auto reset certain parameters, there are short-term instruments light phenomenon;

4. Car guards will record historical fault codes stored fault data to facilitate future maintenance View.

5. Car guards for the user to remove the impact brought about by the fault code shall not be liable.

Read cleared